

wbs

WARWICK BUSINESS SCHOOL
THE UNIVERSITY OF WARWICK

Undergraduate Programme 2019

For the Change Makers





Find out more about us

Visit our website for the latest information on our courses, fees and scholarship opportunities, as well as our latest news, events, and to hear from former and current students about what life is really like here at WBS.


We're always happy to help you with any queries you may have.

T +44 (0)24 7615 1111

E wbsenquiries@wbs.ac.uk


W wbs.ac.uk/go/undergraduate

Join our conversation

 [@warwickbschool](https://twitter.com/warwickbschool)

 wbs.ac.uk/go/wbslinkedin

 facebook.com/warwickbschool

 [@warwickbschool](https://www.instagram.com/warwickbschool)

 [warwickbschool](https://www.youtube.com/warwickbschool)

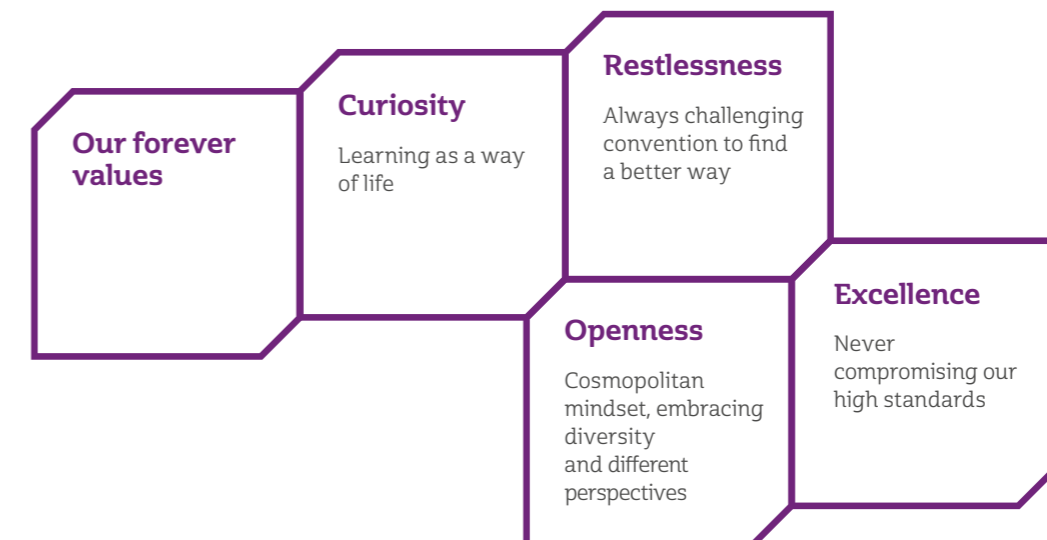
Why Warwick Business School?

Constantly evolving, today's business world is fast paced. To succeed you need not only the very latest theory and practice but also the ability to challenge the status quo and deliver *cutting-edge* solutions.

Warwick Business School is a world-class business school at the heart of a *world-class* university. We welcome students from all over the world. This wide range of cultures fuels our community and creates an exciting environment for diverse discussion and debate. Our unique core values provide a *challenging and innovative* learning culture that will prepare you for success in your future career and propel you towards your individual goals.

Our faculty produces transformative research that seeks to lead the debate and create impact. This research underpins our teaching, helping to *develop inquisitive and entrepreneurial minds* that will make a positive contribution in an ever-changing world.

So, we welcome the future problem solvers, value creators and change makers who share our intellectual curiosity and values. Does that sound like you?



Welcome to Warwick Business School



A Warwick Business School (WBS) undergraduate degree combines academic excellence and the latest theory with practical business insights to ensure you're ready for your next move.

Nestled in the heart of the University of Warwick campus, our prime location means all Undergraduate students have access to state-of-the-art learning facilities, the choice of not one but two dedicated career services, the opportunity to meet with leading organisations and access to a range of societies and facilities to enrich their Warwick experience.

As an undergraduate student at WBS and the University of Warwick you will join a dynamic student body and a lifelong global alumni community. Our world-class reputation is reflected in our rankings and in Warwick's position as the number one targeted university by the largest number of top employers (The Graduate Marketing in 2017 Report).

Whatever your business and career aspirations may be, I am confident that this is the perfect platform from which to start your career, launch new ventures, develop your business thinking, and ultimately achieve your career goals.

Come along to campus, meet us, talk to us and discover what WBS can do for you.

Professor Andy Lockett
Dean of Warwick Business School



WBS offers a fun, challenging and exciting student experience that equips graduates with the necessary knowledge and skills to thrive and succeed in their chosen career path.

Our students are at the very heart of our community, and their insights and feedback help us to shape our modules, courses of study and packages of support. That ensures we provide a great student experience.

All our programmes are consistently ranked highly, and our graduates are in demand by the very best organisations. WBS students

enjoy, and benefit from, a sociable community of learning that successfully combines world-leading academic research, practical and applicable insights and an ethos of success and innovation.

We are proud of our Undergraduate Programme and our student experience, and are very excited about the many innovations and developments that are taking place in order to ensure that WBS students continue to receive the best experience and opportunities possible.

I hope this brochure provides you with all of the information you seek, and I hope it conveys some of the excitement and pride that we all feel about undergraduate courses at WBS.

Should you have any further queries please get in touch, we'll be happy to talk to you.

Professor John Rudd
Associate Dean
(Undergraduate Programme)

No.1

Targeted university by the largest number of top employers

The Graduate Marketing in 2017 Report



5th in the UK for research output

Research Excellence Framework 2014



The University of Warwick is ranked 8th in the UK

The Guardian 2018 ranking



7 professional networks



Founded in 1967

Top 50

Business & Management Studies and Accounting & Finance

Ranked in QS World University Rankings by Subject 2017



69 geographical alumni networks

185,000

University of Warwick global alumni



42,000 WBS global alumni in over 130 countries



44/56%

Female/male split (2017/2018)



45 nationalities represented

Undergraduate courses (2017/2018)

19

The average age of students starting our undergraduate courses





"It's an amazing experience, you're going to meet some amazing, ambitious people from all over the world and you're going to learn a lot about yourself and also how other people work. Those skills will be invaluable whatever you end up doing."

Hugh Thomas
Co-founder, Ugly Drinks
BSc Management (2007–10)

Life on campus

We know that lifestyle is just as important as your undergraduate degree course when selecting where to study.

Our campus is just over an hour by rail from London and on the doorstep of Coventry, Birmingham, Royal Leamington Spa and Stratford-upon-Avon. We're proud to say that it is home to students and staff from all over the world. Inclusive, vibrant and packed with excellent learning, study, lifestyle and practical facilities, our campus is like a small town. Acres of green space provide the perfect backdrop for relaxing, walking, running, cycling and sports.

warwick.ac.uk/about/campus



Jasmine Yeo
Graduate Trainee
Ruffer LLP
BSc International
Business (2012–16)

"I lived on campus in my first year which was a great way to ease the transition between school and university. Everything is available here for you, from shops and banks to a gym."



"I feel that WBS students are very much recruited and looked for. It is a very competitive environment to get jobs nowadays and I don't think I would've been able to get my job without having Warwick Business School on my CV."

Rachel Knott
Restructuring Analyst, EY
BSc International
Management (2011–15)





Arts Centre
with cinema, 2 theatres,
1 gallery and 1 concert hall



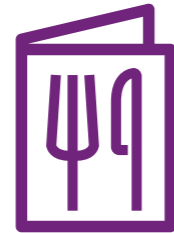
Sports Centre
with swimming pool, games hall,
gym, climbing wall, 8 tennis
courts and over 20 fitness classes



1 grocery store
– easy access to all
your essentials



Night clubs, bars and pubs



12 food and drink outlets
– grab and go or sit and relax



1 monthly food market



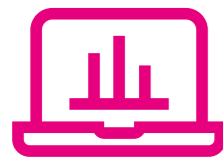
1 chaplaincy
with 5 chaplains from Anglican,
Catholic, Free Church, Jewish
and Muslim faiths



1 health centre



1 pharmacy



5 dedicated study spaces
housed within Warwick Business
School, on campus and in
Leamington Spa



1 library open 24/7



750 acre campus



Kiran Dash
Associate
PwC Middle East
BSc Accounting & Finance
(2013–16)

*“On Warwick campus
you have everything
that you need and for
an international student
that’s the best thing.”*





Alex Austin
Broker Account Manager
Funding Circle UK
BSc Management
(2012–15)

"You don't just feel like you're a Warwick or WBS student while you're here, you feel like you're a Warwick or WBS student for life. You've got that sense of community."



Accommodation

Moving away from home to live at university is an exciting time.

Warwick Accommodation provides free support to all of our full-time students, making the transition to living independently as smooth and worry free as possible by helping you find accommodation that's right for you, whatever your budget, lifestyle or practical needs.

When you apply for accommodation our Residential Life Team will work to match you with people who have similar interests or lifestyles, which makes settling in easier.

Most first-year students apply to live on campus, where you're never more than 15 minutes' walk from your lectures and all of our learning, study, lifestyle and practical facilities.

The University of Warwick guarantees University managed accommodation for all new full-time first-year WBS undergraduates, provided that:

- You've accepted an offer from Warwick as your firm choice
- You apply online for accommodation by the deadline we confirm after you accept our offer
- You meet the conditions of your offer by 31 August.

warwick.ac.uk/services/accommodation



13 halls of residence on campus



8,000 rooms on and off campus

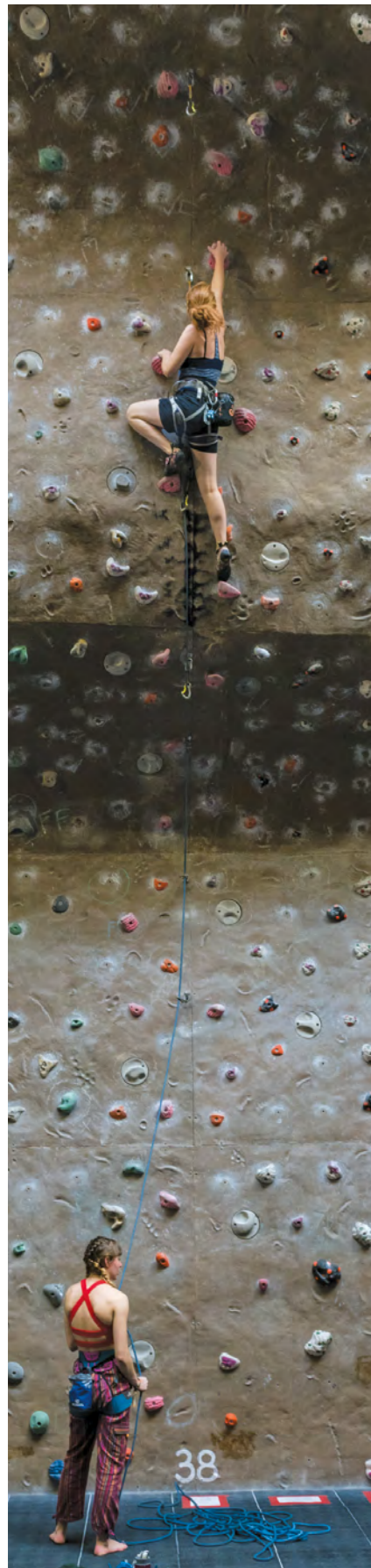


WiFi access



£72-176 pw*

*Figures given are for 2017-18. Updated costs are published at warwick.ac.uk/services/accommodation/studentaccommodation/campus



Clubs, societies and volunteering

With a vibrant Students' Union, over 250 societies on campus and 60 sports clubs there are lots of ways to challenge your mind and body.

There really is something for everyone, enabling you to relax, try something new, find your passion, enhance your employability, have fun and really maximise your Warwick experience.

We work closely with a number of societies including the Management Society, Warwick Entrepreneurs, Enactus, Finance Societies, AIESEC, Marketing Society, Risk Management Society, Women's Careers Society and Warwick Business School Society (WBSS).

WBSS is the largest independent student-run society at the University of Warwick and provides access to a wide range of employers through company presentations and networking events, as well as the opportunity to network with students from other universities. Their buddy scheme is available throughout your first year at university for additional peer support.

You can become further involved with academic life at Warwick by being elected as a Student Representative on the Staff Student Liaison Committee (SSLC) which is made up of students and staff, including Course Directors. The committees provide an accessible arena in which to discuss ideas and provide feedback relating to teaching, learning and student support.

You can also get involved with local and international volunteering opportunities, enabling you to make a difference both close to home and on a global scale.

warwick.ac.uk/about/community/volunteers



Maple Chau
BSc Management
(current student)

"Clubs and societies are a significant part of Warwick life. It is a great chance for students to meet different people and build up their network"



Over 250 Societies



60 Sports Clubs



Local and international volunteering

Student Support



Support services on campus range from helping you manage your finances and workload to settling into shared accommodation and accessing medical services. You will also be allocated a Personal Tutor who is an academic member of staff and whose role is to support students both academically and pastorally.

The Mental Health and Wellbeing Team offer advice and guidance to students on their mental and physical health, working in conjunction with the medical centre and other support services on campus. Disability Services provide tailored support and can put in place reasonable individual adjustments to ensure students can successfully complete their degree and get the most out of life at Warwick.

The Residential Life Team consists of members of staff and postgraduate students who live alongside students on campus in our halls of residence. This means they are nearby if you need someone to chat to and can help you adjust to living away from home among new people.

 warwick.ac.uk/services/supportservices

Launching your career

Perhaps you know exactly what you would like to do after graduation, or perhaps you're still considering your options?

Whatever point you are at in planning your career, you'll find lots of support, resources and activities available at WBS and the University of Warwick to help you make decisions, enhance your employability skills and achieve your career goals.

WBS CareersPlus

Our dedicated WBS CareersPlus team provides specialised careers services solely for WBS students including:

- 1-2-1 careers coaching
- Career planning and preparation workshops
- Employer events
- Work placements and internships.

Our workshops cover all aspects of the job application process, from creating your CV to preparing for interviews and assessment centres. Tailored sessions, such as 'What job is right for you?' can help you to plan your future career and actions. If you have a question about writing applications, wish to explore your career options, or need to prepare for interviews and assessment centres, our 1-2-1 careers appointments with dedicated careers staff can help you, right here at WBS.

We organise employer events on summer internships, year-in-industry placements and graduate opportunities. We also host employer-led skills workshops and run informal networking sessions. Bespoke employer events for our students have seen the likes of EY, L'Oréal, Aldi, Johnson & Johnson, Royal Bank of Scotland, Grant Thornton UK LLP, Accenture and Aston Martin visit WBS, providing students with great networking opportunities and links to top local, national and international brands.

Additional career support



Adam Lister
BSc Accounting & Finance
(2012–16)

“The WBS CareersPlus team helped support me with my application for my work placement at Goldman Sachs, so I was able to organise my thoughts and plan my application efficiently. I found the large number of companies that visit Warwick particularly helpful when applying to firms, I was able to speak to graduates and build up a network.”



Number one targeted university by the largest number of top employers

The Graduate Marketing in 2017 Report

Student Careers & Skills

In addition to the tailored services available at WBS, the University of Warwick has an excellent Centre for Student Careers & Skills who also provide skills workshops, access to job vacancies and further opportunities to meet employers on campus.

Events organised throughout the year include the Business, Finance & Consultancy Fair, Investment Banking Uncovered, Careers in Advertising, Marketing and PR, Careers in Digital Communications, Careers in Politics and Government plus many more. Employers who have been involved in the events previously have included PwC, Deloitte, Barclays, Unilever, Virgin Media, Jaguar Land Rover, Vodafone, the Royal Air Force and Deutsche Bank.

The Centre for Student Careers & Skills also offers innovative ways to gain experience. You can get involved in their active volunteering programme, Warwick Volunteers; apply for undergraduate research bursaries; and access thousands of on-and off-campus work experience opportunities. They also help students pull together their experiences and tell their unique story with confidence in applications and interviews, assisted by their online MyPortfolio tool.

W warwick.ac.uk/careersandskills

Sprint Personal Development Programme

Female undergraduate students can also take advantage of the Sprint Personal Development Programme. It aims to develop confidence and assertiveness and helps you to identify your core values.

It also assists with developing your personal branding and helps you to build strategies for managing stress and change. It is delivered in partnership with employers.

W warwick.ac.uk/services/skills/personal/sprint

The Warwick Skills Portfolio Award

The Warwick Skills Portfolio Award (WSPA) will help you to develop skills that are valued by employers, and that will be useful for you in your personal life, and whilst studying here at Warwick.

W warwick.ac.uk/services/skills/awards/wspa

Mentoring

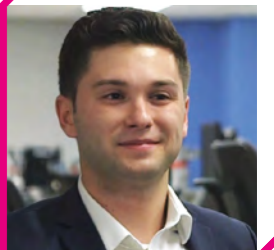
We run a mentoring programme for both students and alumni. All mentors have close links with WBS or Warwick, or are WBS graduates. This award-winning scheme has helped over 550 mentees to date and has been awarded Investors in People accreditation. The programme costs £345 for two years.

W wbs.ac.uk/go/wbsmentoring



Natalia Dobias
Adoption Change
Management Consultant
Microsoft
BSc Management
(2011–15)

“The help from the careers team was invaluable in my first year when I was preparing for job interviews and assessment centres. Their support with building my CV, mock interviews and workshops on interpersonal skills taught me how to stand out from the crowd.”



Victor Vintu
Director of Operations
DigitalGenius
BSc Accounting & Finance
(2009–12)

“If you’re thinking about doing a degree at Warwick, just do it. You have no idea how cool your life is going to turn out after you graduate.”

BSc Accounting & Finance



Peter Corvi
Professorial Teaching
Fellow, Finance,
Course Director

"Interested in studying accounting and finance? Then I hope you will consider applying for a place on our course. It is one of the very best in its class and I never cease to be amazed by what our students achieve whilst they are here and what they go on to do after they graduate.

Our curriculum is intellectually challenging and designed to meet the needs of the accounting and finance professionals of the future, which is why it is accredited by the main professional accountancy bodies, the Association of Corporate Treasurers and the Chartered Financial Analysts' Institute."



Ranked 5th in the UK by
The Complete University
Guide 2018



Ranked 3rd in the UK
by *The Guardian* 2018

Key facts:

UCAS course code: NN34

Course duration: 3 years full-time

Entry requirements

- A levels: AAA including Maths or Further Maths. Maths-related subjects such as Statistics, Economics, Accounting or Finance do not meet the Mathematics requirement for this course
- GCSEs: A in a Humanities/Social Sciences subject
- International Baccalaureate: 38 overall including at least 5 in Higher Level Maths.
- Applications from candidates with other internationally-recognised qualifications are also welcomed.

For English language requirements see page 47.

Exemptions

If you study specific accounting or finance modules as part of your degree you may be eligible for exemptions from a number of professional accountancy exams.

W wbs.ac.uk/go/exemptions

Overview

BSc Accounting & Finance is a professionally-oriented qualification, which is consistently ranked highly in major UK league tables. You will gain the skills, knowledge and confidence to operate effectively in the fast paced world of multinational companies and global financial markets.

You will be encouraged from the outset to think critically, enabling you to analyse and interpret real life business issues in order to devise solutions, helping to prepare you for your career in accountancy, financial services, or management. You will also have the opportunity to develop your interpersonal skills including communication, leadership and team-working, to become more adaptable and resilient to change.

You will be taught by leading academics who are well connected with industry and able to combine cutting-edge theory with real-world practice. We have well-established links with accountancy firms, investment banks and renowned national and international employers such as UBS and EY.

In your third year, one of the modules you will study is Critical Issues in Management. This module will enable you to integrate what you have learned throughout your studies, enhance your knowledge through the introduction of new concepts; and apply your skills to a range of 'real life' case studies.

"There is a visible emphasis on group work at WBS. Working in multicultural groups with new people is exciting and insightful. There is also a range of different modules you can study; the choices for instance range from core finance to different languages."

Murtaza Mohammed
BSc Accounting & Finance
(current student)

"The best thing about the programme is the fact that I can take up a language whilst also doing accounting and finance modules. The various modules will help me to understand how organisations work as a whole. Additionally, the class is diverse with people from all over the world."

Dayana Zahari
BSc Accounting & Finance
(2013–16)

BSc Accounting & Finance

Year 1:

CORE Foundations, Skills and Debates runs across the full year. This new module forms an integral part of the course focusing on ensuring that learning and work skills are embedded and developed from the start. You will learn about creativity, presenting, team-work, negotiation, complex problem solving, argumentation, and debate. It will form a baseline for the rest of your degree.

Term 1: Study a further four core modules introducing you to the fundamentals of accounting, finance, and business management (in addition to CORE Foundations, Skills and Debates). You will also choose which pathway you will take in Term 2: accounting and finance, accounting, or finance.

Term 2: You will study three core modules (in addition to CORE Foundations, Skills and Debates). The model on page 23 shows which modules you will take depending on your chosen pathway.

Term 3: April–June revision and exams.

Year 2:

Term 1: You will study four core modules. If you are following the Finance pathway one of those modules will be Economics of Strategy, otherwise you will study the Accounting in Context module.

Term 2: Study a further four core modules. These will differ depending on the pathway you are following.

Term 3: April–June revision and exams.

Year 3:

Terms 1 and 2: All students take a double module – Critical Issues in Management and then you will choose four elective modules from subject disciplines determined by your pathway. A further two modules can be taken from a wider range of subject areas such as marketing, strategy, law, organisational behaviour or entrepreneurship.

Term 3: April–June revision and exams. If you choose the Undergraduate Partnership Programme, your third year includes assessments in August/September.



Pathway timetable

YEAR 1		YEAR 2		YEAR 3	
Term 1: Oct–Dec	Term 2: Jan–Mar	Term 1: Oct–Dec	Term 2: Jan–Mar	Term 1: Oct–Dec	Term 2: Jan–Mar
Introduction to Financial Accounting AF, A, F	CORE: Foundations, Skills and Debates* AF, A, F	CORE: Global Environment of Business AF, A, F	CORE: Entrepreneurial Mindset AF, A, F	CORE: Critical Issues in Management AF, A, F	CORE: Critical Issues in Management AF, A, F
Financial Management AF, A, F	Foundations of Management Accounting AF, A, F	Accounting in Context AF, A	Issues in Management Accounting AF, A	Accounting or Finance Elective AF, A, F	Accounting or Finance Elective AF, A, F
Business Law 1 AF, A, F	Economics for Business AF, A, F	Economics of Strategy F	Financial Econometrics F	Elective AF, A, F	Elective AF, A, F
Business Statistics AF, A, F	Management, Organisations and Society AF, A	Financial Reporting 1 AF, A, F	Financial Reporting 2 AF, A, F	Accounting or Finance Elective AF	Accounting or Finance Elective AF
	Business Analytics F	Finance 1 AF, A, F	Finance 2 AF, F	Finance Elective F	Finance Elective F
			Business Law 2 A	Accounting Elective A	Accounting Elective A

The timetable above demonstrates which modules you will take throughout the three years depending on your chosen pathway.

* This module runs across both term 1 and term 2

Key:

- AF = Accounting & Finance pathway
- A = Accounting pathway
- F = Finance pathway

BSc Accounting & Finance

How will I be assessed?

Throughout the study programme you will be assessed by a mix of examinations, essays, reports, case-study analyses and group work.

Placements

In collaboration with the Institute of Chartered Accountants in England and Wales (ICAEW), we participate in the Undergraduate Partnership Programme which enables selected students to gain professional work experience during an intercalated year. This involves working in an accounting role with an ICAEW member organisation during the third year of the course. Depending on the organisation, you may also be able to take professional ACA exams during the placement which will form the first year of the ACA training contract. You can work in the UK or overseas, before returning to WBS for the final year of the course. The placement year forms 10% of the overall degree classification.

You may also be interested in securing a summer internship, or applying for a Spring Week position at an accountancy firm or investment bank; our dedicated WBS CareersPlus team will be on hand to support you with your application. In addition to working in accounting, our students also take up work placements focusing on finance and consulting.

Here are some examples of the companies our students have worked at while on their placement:

- EY
- ESSO
- MGH Technology solutions
- PwC
- RSM
- The Walt Disney Company.

After WBS

What do our graduates do?

- Audit Associate
- ACA Graduate Trainee
- Assurance Associate
- Business Consultant
- Commercial Analyst
- Corporate Analyst Graduate Trainee
- Investment Banking Analyst
- Macro Trader
- Markets & Security Services Analyst
- Mergers and Acquisitions Analyst.

Source: GEMS Data Classes of 2013/14 and 2014/15 and WBS Cohort Data Classes of 2015/16 and 2016/17. This is a selection of what our graduates went on to do.

Where do our graduates work?

- Barclays
- BP
- Deloitte
- EY
- Goldman Sachs
- HM Revenue and Customs
- HSBC
- JP Morgan
- KPMG
- Lloyds Banking Group
- Petronas
- PwC
- Royal Bank of Scotland.

Source: GEMS Data Classes of 2013/14 and 2014/15 and WBS Cohort Data Classes of 2015/16 and 2016/17. This is a selection of what our graduates went on to do.

89%

of students go on to work and/or study six months after completing the course



BSc International Business



Frances O'Brien
Associate Professor of
Operational Research,
Course Director

"This four year course is our only degree with language as a core component. For the first two years we offer you a firm grounding in a range of business disciplines as well as developing your language skills.

In your third year, you have the opportunity to study abroad. Every year I notice how our returning students have matured within themselves and improved their language confidence and competence; they also return full of stories which they enthusiastically share. Your final year is then your chance to choose different specialist options."

Key facts:

UCAS course codes:

BSc International Business with French: N1R1
BSc International Business with German: N1R2
BSc International Business with Italian: N1R3
BSc International Business with Spanish: N1R4

Course duration: 4 years full-time (with year abroad)

Entry requirements

- A levels: AAA
- GCSEs: A in Maths and A in a Humanities/ Social Sciences subject
- International Baccalaureate: 38 overall with a Higher Level 5 in the language
- You must have a qualification in the language to be studied such as A level or IB Higher level French, German or Spanish, or equivalent in other acceptable qualifications, or at least CEFR B2 in all four language skills: reading, writing, listening, speaking
- If you are interested in the Italian stream, evidence of language ability at A level or equivalent in any modern foreign language is sufficient. Grade B in GCSE Italian or 5 in IB Standard Level Italian are also considered
- You will not be able to study a language in which you are already fluent or a native speaker.

For English language requirements see page 47.

Exemptions

If you study specific accountancy or finance modules as part of your degree, you may be eligible for exemptions from a number of professional accountancy exams.

W wbs.ac.uk/go/exemptions

Overview

Today's fast-paced business world requires the ability to think and act globally. Our highly ranked programme will enable you to combine your passion for languages with a business degree.

Throughout the course you will develop a deep understanding of the core principles of international business and management which will be further advanced by a guaranteed year abroad either working or studying in your chosen language, enabling you to enhance your foreign language skills.

During your year abroad you'll immerse yourself in local culture. If you choose to work, you will also learn about doing business in another country and the differences in working practices. Whichever path you choose, you will return to WBS a confident learner, ready to put your new and developed knowledge and skills into practice for your final year.

You'll benefit from working with people from other countries which ensures interesting group work and debate and further increases your international experience.

Year abroad

You will have the opportunity to gain a place with one of our partner universities in Europe, Canada or Latin America. The flexibility of our year abroad allows you to choose whether you would like to study, undertake a work placement or a combination of the two. We do not organise work placements, however our dedicated WBS CareersPlus team will provide support in making your applications.

An integral part of your year abroad will be to attend a seminar. This three-day seminar will provide the opportunity to reflect on your year-abroad and support you in preparing for the two assignments that make up 10% of your overall degree.

In addition, you will work in groups on a case study that relates to the city in which the seminar is taking place. Previous seminars have been based in Venice and case studies have included The Rialto Market and Venice in Peril.

In your third year you will have the opportunity to take up a work placement. Our WBS CareersPlus team will provide advice and guidance on finding a placement.

Here are some examples of the companies our students have worked at while on their approved work placement:

- BNP Paribas
- British Chamber of Commerce, Mexico
- HSBC
- IBM
- L'Oréal
- Microsoft
- Nestlé.



Tamsin Wood
BSc International Business
(current student)

"International Business has provided me with a perfect fusion between my love of language and business. The first year of the course suited my needs perfectly as I wasn't sure on my specialism so the wide range of modules in all functions of business allowed me to discover my expertise."



9 nationalities represented on the programme



67/33%
Female/male split



Ranked 4th in the UK by *The Guardian* 2018

BSc International Business

Year 1:

CORE Foundations, Skills and Debates runs across the full year. This new module forms an integral part of the course focusing on ensuring that learning and work skills are embedded and developed from the start. You will learn about creativity, presenting, team-work, negotiation, complex problem-solving, argumentation, and debate. It will form a baseline for the rest of your degree.

Terms 1 and 2: Study a further seven core modules that provide an introduction to key areas of business, including a double module in your chosen language.

Term 3, April–June: Revision and exams.

Year 2:

Terms 1 and 2: Continue with your language and cultural studies along with four core modules and two electives.

Term 3, April–June: Revision and exams.

Year 3:

Whether you are studying or working abroad, you will also take two core modules: International Business in Context, and Year Abroad Portfolio which are submitted on your return in your fourth year. This year counts for 10% of your final degree classification. You will attend a three day seminar in term 2, which typically takes place in Venice, and is an assessed part of your degree. Your third year includes exams at partner institutions (not counted) and two assignments submitted August/September.

Year 4:

Terms 1 and 2: Five core modules which include the double weighted module Critical Issues in Management and Language modules, plus International Perspectives in Business, Management and Society. You will also take three elective modules.

Term 3, April–June: Revision and exams.

YEAR 1		YEAR 2		YEAR 3	YEAR 4	
Term 1: Oct–Dec	Term 2: Jan–Mar	Term 1: Oct–Dec	Term 2: Jan–Mar		Term 1: Oct–Dec	Term 2: Jan–Mar
Introduction to Financial Accounting	CORE: Foundations, Skills and Debates*	CORE: Global Environment of Business	CORE: Entrepreneurial Mindset	Year abroad either studying, working or both	CORE: Critical Issues in Management	CORE: Critical Issues in Management
Business Statistics	Foundations of Financial Management	Elective	Economics for Business		Language	Language
Markets, Marketing and Strategy	Management, Organisations and Society	Governance, Politics and Corporate Accountability	Elective		International Perspectives in Business and Management	Elective
Language	Language	Language	Language		Elective	Elective

* This module runs across both term 1 and term 2

Elective modules

You can choose elective modules from a range of subject areas including: accounting, finance, marketing, strategy, law, information systems management, operational research, organisational behaviour and operations management. In your final year, you may study a second language.

How will I be assessed?

Throughout the study programme you will be assessed by a mixture of examinations, essays, reports, case-study analyses and group work.

After WBS

What do our graduates do?

- Assistant Brand Manager
- Associate Consultant
- Associate Partner Manager
- Business Development Assistant
- Graduate Marketing Professional
- Implementation Consultant
- Junior Business Analyst
- Junior Consultant
- Marketing Executive
- Performance Analyst
- Research Officer
- Sourcing Executive.

Source: GEMS Data Classes of 2013/14 and 2014/15 and WBS Cohort Data Classes of 2015/16 and 2016/17. This is a selection of what our graduates went on to do.

Where do our graduates work?

- Amazon
- BP
- CACI Ltd
- Deloitte
- EY
- General Electric
- JP Morgan
- Paramount
- Pernod Ricard
- PwC
- Société Générale
- Speed
- Unilever.

Source: GEMS Data Classes of 2013/14 and 2014/15 and WBS Cohort Data Classes of 2015/16 and 2016/17. This is a selection of what our graduates went on to do.

90%

of students go on to work and/or study six months after completing the course



Luis Peiro Camaro Adan
BSc International Business
(2012–16)

“The best thing about my course was the opportunity to study abroad. I was not only able to discover and learn a new culture, but to open my mind further, developing my ability to think critically.”

BSc International Management



Ashley Roberts
Principal Teaching Fellow,
Course Director

"This intensively exciting intellectual environment is one of the reasons why I am so thrilled and enthusiastic about teaching here. Every year I am also extremely proud to see so many of my students graduating and embarking on interesting and fulfilling careers with top companies in the UK and abroad."

"In an era of global economic integration, knowledge and insights about different business cultures has become an essential tool. This four year programme incorporates a year abroad, where you will develop skills that are essential in the business world, namely the ability to successfully adapt to changing environments."

Key facts:

UCAS course code: N290

Course duration: 4 years full-time

Entry requirements

- A levels: AAA
- GCSEs: A in Maths and A in a Humanities/ Social Sciences subject
- International Baccalaureate: 38 overall
- Applications from candidates with other internationally-recognised qualifications are also welcomed.

For English language requirements see page 47.

Exemptions

If you study specific accountancy or finance modules during your degree, you may be eligible for exemptions from a number of professional accountancy exams.

wbs.ac.uk/go/exemptions

Overview

Our BSc International Management degree is consistently highly-ranked. It provides the opportunity to gain a broad knowledge of business and management, while improving your ability to operate across cultural boundaries, embrace different perspectives and challenge traditional ways of thinking.

International exposure brings added value to your academic, personal and professional development and enables you to build your global network. Both traditional and innovative teaching methods, enhanced by state-of-the-art technology, are used to provide a wide range of learning experiences.

You can tailor your degree towards your career aspirations by selecting elective modules from WBS and other University of Warwick departments. This provides the opportunity to specialise in a particular area or to take a broader approach to your studies.

Year abroad

You will spend a compulsory year abroad, either studying at a partner university, in a work placement or a combination of the two. We have partnered with over 50 institutions in over 20 countries around the world. Current partnerships are offered in Australia, Brazil, Canada, China, Hong Kong, Japan, North America, Russia, Singapore, South Korea and various countries across Europe. Evidence suggests that students taking a year abroad as part of their degree are, on average, twice as likely to be in employment after their degree (Going Global Report, 2016).

Our WBS CareersPlus team will provide advice and guidance on finding a work placement.

Here are some examples of the companies our students have worked at while on their approved work placement:

- British Chambers of Commerce
- Chanel
- Clarins
- Colgate
- Goldman Sachs
- HSBC
- IBM
- L'Oréal
- Peugeot
- Procter and Gamble
- Rothschild & Co.



Ranked 4th in the UK
by *The Guardian* 2018



46/54%
Female/male split



25 nationalities
represented on
the programme



Victoire Lépine
BSc International
Management
(2013–17)

"The best thing about this course is the freedom you have to shape your own degree. You can choose elective modules according to what matters the most to you. Additionally, WBS has amazing choices for year abroad destinations including some of the best business schools in Europe and also leading universities in exciting international cities."

BSc International Management

Year 1:

CORE Foundations, Skills and Debates runs across the full year. This new module forms an integral part of the course focusing on ensuring that learning and work skills are embedded and developed from the start. You will learn about creativity, presenting, team-work, negotiation, complex problem solving, argumentation, and debate. It will form a baseline for the rest of your degree.

Term 1: Study a further three core modules that provide an introduction to key areas of business.

Term 2: Study four further core modules but choose between Business Analytics or GPCA**.

Term 3, April–June: Revision and exams.

Year 2:

Terms 1 and 2: Three core modules and five electives, which can be chosen from a range of subject areas including accounting, human resources, or a double language through the University's language centre.

Term 3, April–June: Revision and exams.

Year 3:

Whether you are studying or working abroad, you will also take two core modules: International Management in Context, and Year Abroad Portfolio which are submitted on your return in your fourth year. This year counts for 10% of your final degree classification. You will also attend a workshop in term 2 at an appropriate location near to where you are studying/working.

Year 4:

Term 1: Study two core modules including Critical Issues in Management, International Perspectives in Business, Management and Society plus two electives.

Term 2: Continue with Critical Issues in Management and three elective modules.

Term 3, April–June: Revision and exams.

Elective modules

You can choose elective modules from a range of subject areas including: marketing, strategy, entrepreneurship, human resources, customer service management, industrial relations and law as well as accounting and finance. You may select subjects from outside of WBS such as economics, or a language.

How will I be assessed?

Throughout the study programme you will be assessed by a mixture of examinations, essays, reports, case-study analyses and group work.

After WBS

What do our graduates do?

- Category Executive Intern
- Human Resource Manager
- Senior Marketing Executive
- Business Analyst
- Business Consultant
- Investment Banking Analyst
- Investment Consultant Analyst
- Management Consultant.

Source: GEMS Data Classes of 2013/14 and 2014/15 and WBS Cohort Data Classes of 2015/16 and 2016/17. This is a selection of what our graduates went on to do.

Where do our graduates work?

- Amazon
- Danone UK
- EY
- Goldman Sachs
- HSBC
- Kuehne and Nagel
- Merrill Lynch Wealth Management
- Procter & Gamble.

Source: GEMS Data Classes of 2013/14 and 2014/15 and WBS Cohort Data Classes of 2015/16 and 2016/17. This is a selection of what our graduates went on to do.



Shalani Bhalla
BSc International Management
(current student)

YEAR 1		YEAR 2		YEAR 3	YEAR 4	
Term 1: Oct–Dec	Term 2: Jan–Mar	Term 1: Oct–Dec	Term 2: Jan–Mar		Term 1: Oct–Dec	Term 2: Jan–Mar
CORE: Foundations, Skills and Debates*	Foundations of Financial Management	CORE: Global Environment of Business	CORE: Entrepreneurial Mindset	Year abroad either studying, working or both	CORE: Critical Issues in Management	CORE: Critical Issues in Management
Introduction to Financial Accounting	Economics for Business	Operations Management	Elective		International Perspectives in Business and Management	Elective
Business Statistics	Management, Organisations and Society	Elective	Elective		Elective	Elective
Markets, Marketing and Strategy	Business Analytics or GPCA**	Elective	Elective		Elective	Elective

Year 3 includes exams at partner institutions (not counted) and two assignments submitted August/September.

* This module runs across both term 1 and term 2

**Governance, Politics and Corporate Accountability

80%

of students go on to work and/or study six months after completing the course

“Studying at Warwick has truly exceeded my expectations as it has allowed me to broaden my horizons in an academic, social and cultural sense. The beauty of my degree is its flexibility in accommodating all interests and areas in business.”

BSc Management



Jude McNabb
Teaching Fellow,
Course Director

Key facts:

UCAS course code: N200

Course duration: 3 years full-time

Entry requirements

- A levels: AAA
- GCSEs: A in Maths and A in a Humanities/ Social Sciences subject
- International Baccalaureate: 38 overall
- Applications from candidates with other internationally-recognised qualifications are also welcomed.

For English language requirements see page 47.

Exemptions

If you study specific accountancy or finance modules during your degree, you may be eligible for exemptions from a number of professional accountancy exams.

W wbs.ac.uk/go/exemptions



Ranked 4th in the UK
by *The Guardian* 2018



41 nationalities
represented on
the programme

Overview

Our BSc Management degree is consistently ranked one of the best in its class, equipping students with the skills, knowledge and confidence to operate effectively in a range of roles in international brands, multinational companies, global financial markets and new business ventures.

Your final two years on this course are highly flexible as you can choose modules to tailor your experience to meet your interests, development needs and career aspirations. This means you can follow a generalist route in business and management to keep your career options open or choose to specialise in a particular discipline, such as Finance, Marketing or Digital Innovation, to improve your employability in that area.

As well as enhancing your career potential, the course will enable you to develop as a critically-reflective thinker, able to analyse and interpret business-related problems and to devise creative and enterprising solutions that straddle multi-disciplinary boundaries. You'll benefit from studying with students from a range of different countries, in a mutually supportive and collaborative learning environment.

The course offers opportunities to develop key inter-personal skills, communication, leadership and team-working, and to become more adaptable and resilient to change.



42/58%

Female/male split

"I'm pleased to see that you are considering our BSc in Management. This is our most flexible undergraduate course as it gives you the opportunity to choose a range of modules throughout the three year programme. This means that if you're not yet sure what you would like to do after you graduate then you will have plenty of opportunities to work out what you enjoy, and excel at, whilst you complete your degree here at WBS."



"What makes this course so special is the opportunity to discover the vast range of areas of business. The first-year modules have allowed me to gain a solid understanding of the fundamentals of management, whilst the flexibility in second and third year to choose from a very wide variety of modules has allowed me to explore and find the areas that I am most passionate about."

Jola Maczkiewics
BSc Management
(current student)



"Being friends from a young age we have constantly pushed each other to reach new heights. When it came to deciding our university, Warwick seemed the perfect fit. The programme is highly tailored, practical and flexible which gives us the opportunity to tailor it to our individual career goals."

Cain Rothe and Ziar Khosrawi
BSc Management
(current students)

BSc Management

Year 1:

CORE Foundations, Skills and Debates runs across the full year. This new module forms an integral part of the course focusing on ensuring that learning and work skills are embedded and developed from the start. You will learn about creativity, presenting, team-work, negotiation, complex problem-solving, argumentation, and debate. It will form a baseline for the rest of your degree.

Term 1: Study a further three core modules that provide an introduction to key areas of business.

Term 2: Study four further core modules but choose between Business Analytics or GPCA**.

Term 3, April–June: Revision and exams.

Year 2:

Terms 1 and 2: Three core modules and five electives. You can choose to specialise in either Finance, Marketing or Digital Innovation by selecting relevant elective modules in years two and three. Your transcript on graduation will reflect this, adding even more value to your degree when applying for work in either sector. Alternatively you can choose from other subject specialisms.

Year 3:

Terms 1 and 2: One double weighted core module, Critical Issues in Management, and six electives.

Term 3, April–June: Revision and exams.

YEAR 1		YEAR 2		YEAR 3	
Term 1: Oct–Dec	Term 2: Jan–Mar	Term 1: Oct–Dec	Term 2: Jan–Mar	Term 1: Oct–Dec	Term 2: Jan–Mar
CORE: Foundations Skills and Debates*	Foundations of Financial Management	CORE: Global Environment of Business	CORE: Entrepreneurial Mindset	CORE: Critical Issues in Management	CORE: Critical Issues in Management
Introduction to Financial Accounting	Economics for Business	Operations Management	Elective	Elective	Elective
Business Statistics	Management, Organisations and Society	Elective	Elective	Elective	Elective
Markets, Marketing and Strategy	Business Analytics or GPCA**	Elective	Elective	Elective	Elective

* This module runs across both term 1 and term 2

**Governance, Politics and Corporate Accountability

Elective modules

You can choose elective modules from a range of subject areas including: marketing, digital innovation, strategy, entrepreneurship, human resources, customer service management, employment relations and law, as well as accounting and finance. You may select subjects from outside of WBS such as economics or a language.

How will I be assessed?

Throughout the study programme you will be assessed by a mixture of examinations, essays, reports, case-study analyses and group work.

Placements

Why not extend your degree to four years and take an intercalated year working in industry? Our WBS CareersPlus team will provide advice and guidance on finding a placement. Alternatively, many of our students gain exposure to their preferred sector or organisation as part of a summer internship, which can be a great way to secure a graduate job.

If you want to work in accounting you can apply for a placement on our Undergraduate Partnership Programme. In collaboration with the Institute of Chartered Accountants in England and Wales (ICAEW), we participate in the Undergraduate Partnership Programme which enables selected students to gain professional work experience during an intercalated year. This involves working in an accounting role with an ICAEW member organisation during the third year of the course. Depending on the organisation, you may also be able to take professional ACA exams during the placement which will form the first year of the ACA training contract. You can work in the UK or overseas, before returning to WBS for the final year of the course. The programme forms

10% of the overall degree classification.

Here are some examples of the companies our students have worked at while on their placement:

- Accenture
- Amazon
- Clarins
- Cognitive Leap
- Deloitte
- Disney
- EY
- Ford
- GlaxoSmithKline
- IBM
- Jaguar Land Rover
- L'Oréal
- Marks & Spencer
- Microsoft
- Rolls-Royce.

After WBS

What do our graduates do?

- Analyst Risk Control Technician
- Audit Associate
- Communications Consultant
- Commercial Banking Analyst
- Consulting Associate
- Corporate Finance Analyst
- Corporate Tax Associate
- Entrepreneur and Strategic Manager
- National Account Manager
- Private Equity Analyst
- Procurement Graduate
- Project Manager
- Research and Marketing Analyst
- Start-up Co-founder.

Source: GEMS Data Classes of 2013/14 and 2014/15 and WBS Cohort Data Classes of 2015/16 and 2016/17.

This is a selection of what our graduates went on to do.

Where do our graduates work?

- American Express
- Amazon
- Barclays
- British Airways
- Danone UK
- Deutsche Bank
- Deloitte
- EY
- Goldman Sachs
- JP Morgan
- KPMG
- McKinsey & Company
- Morgan Stanley
- Microsoft
- Network Rail
- Procter & Gamble
- PwC
- Rolls-Royce.

Source: GEMS Data Classes of 2013/14 and 2014/15 and WBS Cohort Data Classes of 2015/16 and 2016/17. This is a selection of what our graduates went on to do.

95%
of students go on to work and/or study six months after completing the course

Foundation Year



Tamara Friedrich
Associate Professor
of Entrepreneurship
and Innovation,
Course Director

"We have four Core Values at WBS – Curiosity, Openness, Restlessness and Excellence. A part of our "Openness" value means that we embrace diversity. Warwick is an incredible place – a safe space for challenging your assumptions, learning and debating with others who are equally dedicated to developing their knowledge and skills. We also give everyone the same opportunity to realise their potential. In the Foundation Year Programme, we want to make sure that we welcome people who would have the potential to succeed but have not met our normal entry requirements due to barriers beyond their control."

Key facts:

You must apply through UCAS. The Warwick UCAS institution code is W20. The course codes are:

BSc Accounting & Finance with Foundation Year: N4N4

BSc Management with Foundation Year: N20A

Entry requirements

- Applicants interested in BSc Accounting and Finance (with Foundation Year) should have studied a higher level quantitative subject such as Maths, Further Maths, Physics, Calculus or Statistics
- A Level completion of three full courses, excluding General Studies and Critical Thinking
- Other qualifications e.g. Welsh Baccalaureate, Scottish Advanced Highers
- BTEC completion of BTEC Level 3 Extended Diploma
- GCSE 'B' in GCSE English Language, 'B' in GCSE Mathematics and 'C' in five other GCSE subjects. Applicants with grade C in GCSE English Language and grade B in GCSE English Literature will also be considered
- Applications from candidates with other vocational or internationally-recognised qualifications are also welcome
- You must also meet at least two of the Widening Participation criteria listed on the WBS website.

More information is available at:

W wbs.ac.uk/go/foundation

For English language requirements see page 47.

Overview

This exciting year-long course prepares you for degree-level study on BSc Accounting & Finance or BSc Management.

The Foundation Year provides you with an understanding of the key areas of business whilst preparing you with the necessary skills for your undergraduate degree. The course also gives you the opportunity to spend a year familiarising yourself with university life.

We provide a diverse programme of events and activities, such as off campus visits to businesses, guest lectures, careers workshops, and service projects, that build your confidence and can provide experiences you draw from when you move on to degree-level study.

Our Foundation Year students have done, and continue to do, amazing things. We recognise that there are bright, motivated students who are capable of succeeding on our courses who may not get the chance to because of circumstances beyond their control. Students from disadvantaged backgrounds are not always able to gain access to higher education at the same rate as other students – not because they cannot succeed, but because of barriers that make it difficult to prove they can. If you think you might be one of these students, someone who is motivated and eager to learn, but has not met our standard admissions criteria then this course could be for you.

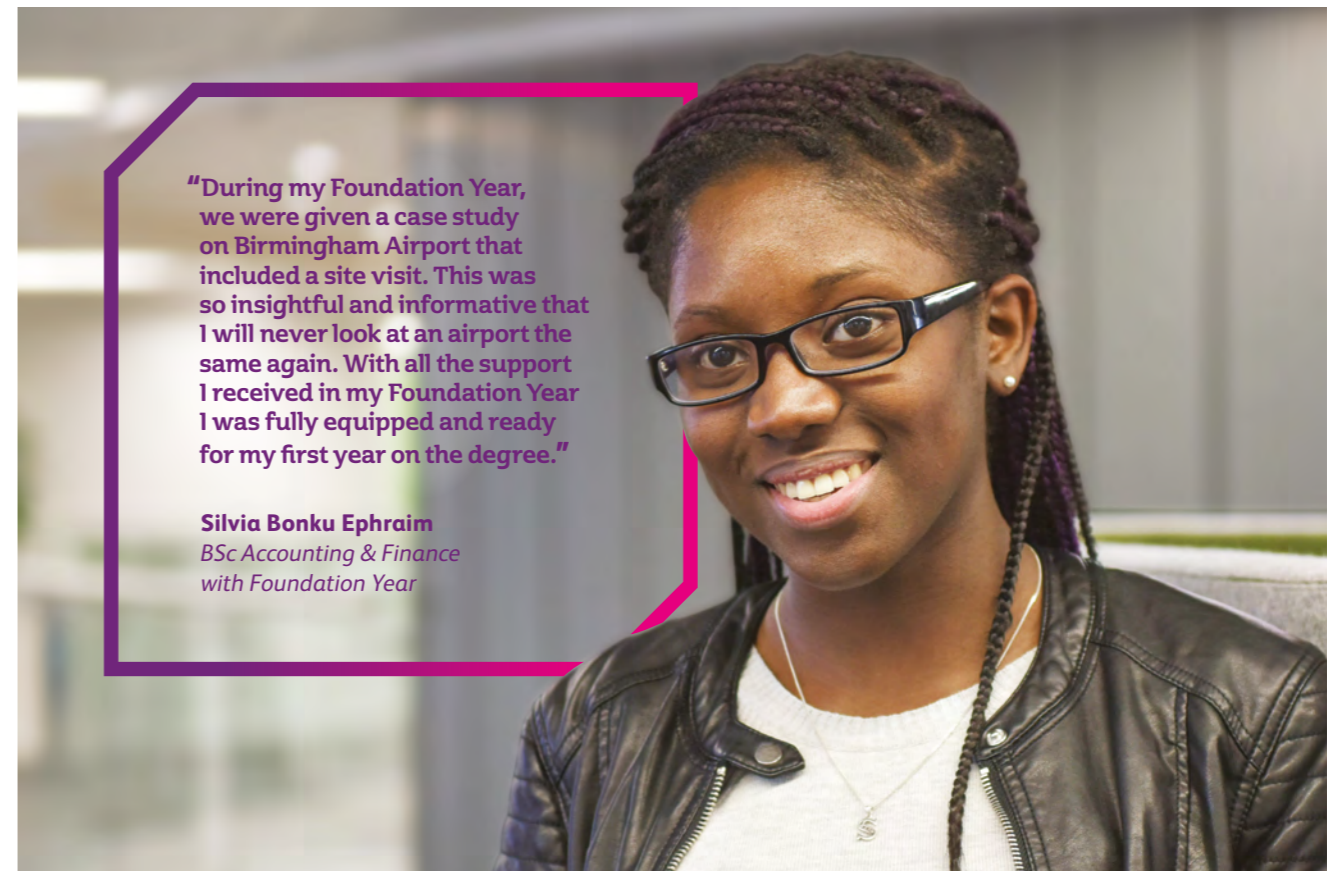
Throughout the course you will receive a great deal of support from our dedicated team of academic faculty, personal tutors, former Foundation Year student mentors, and our administrative staff.

If you successfully complete the Foundation Year, you will automatically progress to either BSc Accounting & Finance (with Foundation Year) or BSc Management (with Foundation Year) and join our direct entry students in Year 1.



"The Foundation Year helped me gain a broad understanding of the fundamental elements of my first year modules, as well as teaching me the techniques required for university study, highlighting how it differs from sixth form study."

Daniel Walker
BSc Accounting & Finance
with Foundation Year



"During my Foundation Year, we were given a case study on Birmingham Airport that included a site visit. This was so insightful and informative that I will never look at an airport the same again. With all the support I received in my Foundation Year I was fully equipped and ready for my first year on the degree."

Silvia Bonku Ephraim
BSc Accounting & Finance
with Foundation Year

Foundation Year

Term 1:

You will study four modules including Business Maths and Statistics, Foundations of Business, Academic Practice, and Problem Solving in Organisations.

Term 2:

You will study five modules including Business Maths and Statistics, Foundations of Business, Academic Practice, Problem Solving in Organisations, and Individual Project.

Term 3:

You will complete a research project based on an organisation as part of Individual Project module, complete exams and other assessments.

How will I be assessed?

Throughout the year you will be assessed by a mixture of group work, presentations, class tests, assignments, report writing and exams.

After WBS

What do our graduates do?

Students will progress on to either BSc Accounting & Finance or BSc Management after successful completion of the Foundation Year. On graduating from these courses, students typically work in accounting, management consulting, finance, marketing, human resources, or may even start up their own business.

What will happen if I become short-listed?

Short-listed applicants will normally be invited to attend a selection day, including an interview at Warwick, to assess their academic potential and commitment to further study. This invitation will usually be sent by email. Offers may be conditional on you meeting academic or other requirements. Don't worry about this - many students have conditional offers. Once you have met your conditions, the offer will automatically be made unconditional.

Foundation Year fees

We are offering a scholarship to all students who are selected to study on the course, covering the full tuition fees of the Foundation Year. Fees for subsequent years will be charged at the standard home fee rate. In addition students can apply for Warwick bursaries to support their living costs.

W wbs.ac.uk/go/uowbursaries

Joining us from overseas?

International applicants should consider the Warwick International Foundation Programme designed specifically for non-UK students.

W warwick.ac.uk/study/ifp



Joint degrees

We offer many opportunities for cross-curricular study through elective modules on our courses. Additionally, the following joint degrees are offered in collaboration with other departments at the University of Warwick.

- BA Law & Business Studies
- BA German & Business Studies
- BSc Physics & Business Studies
- BSc Mathematics & Business Studies
- BSc Engineering & Business Studies
- BSc Computer & Management Sciences
- BSc Mathematics, Operational Research, Statistics & Economics (MORSE)
- BASc in Global Sustainable Development and Business Studies

Recruitment for all of the above courses is carried out by the alternative department.

warwick.ac.uk/study/undergraduate

Applications, fees and funding

Tuition fees for students paying Home or EU fees at UK universities are regulated by the UK Government. The tuition fee rate for Home or EU entrants commencing study in 2018 is set at £9,250. However, in the future, the Home tuition fee rate for new and continuing students may increase in line with government regulation.

Home and EU fees for 2019 entry are not yet confirmed. As soon as we are able to provide updated information it will be published on both the University of Warwick and Warwick Business School websites.

Tuition fees for overseas students have been set by the University of Warwick until 2019–20 at £24,540 per year.

Find out the latest information about tuition fees for Home, EU and Overseas entrants:

warwick.ac.uk/ugfees

What's included?

The fee includes registration, tuition, examination, and graduation. It excludes: study materials, re-examination (re-sits), residential accommodation, meals, travel, graduation robes and photographs. Find out more about costs, funding your studies, scholarships and bursaries:

warwick.ac.uk/ug/studentfunding

Financial support

Tuition Fee Loans are also available to first time Undergraduate students from the UK, this loan is not based on household income. For the latest information:

warwick.ac.uk/studentfunding

For the latest information about student loans:

gov.uk/student-finance

For the latest information about student loans:

warwick.ac.uk/warwickusb

EU students

EU students should visit the UK Government website for the latest information about tuition fees and support available.

At the time of publication, no government announcements had been made regarding tuition fee loans for EU students in 2019–20.

gov.uk/student-finance/eu-students

English language test minimum score

For 2018 the English Language requirements for students were as follows:

IELTS 7.0 – including minimum 6.5 in each component.

CPE grade C – with no less than Borderline in any element or 190 overall with no less than 180 in any component.

CAE grade A – with no less than Borderline in any element or 190 overall with no less than 180 in any component.

PTE 75 – with no less than 59 in any component.

English language requirements for 2019 entry are not yet confirmed, to find out the latest information:

warwick.ac.uk/study/undergraduate/apply/language/

Widening participation

The University of Warwick works with young people to enhance access to higher education for all those who aspire to study at university, regardless of background. The Widening Participation and Outreach team run a wide range of programmes and events to encourage the most talented potential applicants and to ensure our student body is representative of our local and wider national communities. These activities are targeted at state school educated students, students who would be the first in their family to attend university, students from low socio-economic backgrounds and students who come from neighbourhoods where there is low progression to university.

warwick.ac.uk/study/outreach

Applications

You must apply through UCAS using the institution code W20. Competition for places is high, so we recommend you apply early. We do not usually interview candidates so do make sure your UCAS submission contains information about your academic and extracurricular achievements to show us why you are interested in joining us.

ucas.com

What next?

Open Days usually run four times a year and enable you to visit WBS, meet our academics and tour campus accommodation.

W warwick.ac.uk/study/undergraduate/visits

Alternatively, you can arrange a 1-2-1 information session with us at a time that is convenient for you.

W your.warwick.ac.uk/form/wbsinfo

Get in touch

T +44 (0)24 7615 1111

E wbsenquiries@wbs.ac.uk

W wbs.ac.uk/go/undergraduate

Find us on:

T [@warwickbschool](https://twitter.com/warwickbschool)

in wbs.ac.uk/go/wbslinkedin

f facebook.com/warwickbschool

@ [@warwickbschool](https://www.instagram.com/warwickbschool)

▶ [warwickbschool](https://www.youtube.com/warwickbschool)

Essential information

This document was accurate at the time of printing. However, it is published 12 months before enrolment on the course to which it applies. Given the long interval between drafting/publication and enrolment, some of the information may change. It is therefore very important that you check our website for any updates before you apply:

W wbs.ac.uk/courses/undergraduate

Where there is a difference between the contents of this document and our website, the contents of the website take precedence and represent the basis on which we intend to deliver our services to you. Any offer of a place to study at the University is subject to terms and conditions, which you are advised to read before making an application:

W warwick.ac.uk/ug/apply/offerholders/aboutoffer/terms

The terms and conditions set out when, for example, we might make changes to your chosen course, to the fees payable or to student regulations. It is therefore important you read and take note of them. Information about wider student rights and responsibilities can be found at:

W warwick.ac.uk/services/aro/studentrights

Equal opportunities

At Warwick we are committed to equality of opportunity, as stated in our Equal Opportunity Policy. We welcome applications from anyone with the potential to succeed in higher education. The University aims to avoid unfair discrimination on whatever grounds, including gender and ethnic background.

The Students' Union

Under the requirements of the Education Act 1984 Part 2, the University is obliged to inform students of their right not to be members of the Students' Union. The University is satisfied that the provision of services or facilities made by the University and the Union for all students, whether they are members of the Union or not, is sufficient to ensure that those who have exercised the right of non-membership under the act are not unfairly disadvantaged; it has therefore made no special arrangements for the provision of services or facilities for non-members of the Union.



Printed on FSC certified paper,
using vegetable-based inks.

Please recycle or pass to a friend.

WBS believes this document is
accurate, but accepts no liability
for errors or later changes. See our
website for the latest information.

Undergraduate Programme
Warwick Business School
The University of Warwick
Coventry CV4 7AL UK

T +44 (0)24 7615 1111

E wbsugenquiries@wbs.ac.uk

W wbs.ac.uk/go/undergraduate